

**MOTHERCARE PREPARATORY SCHOOLS
END OF FIRST MONTH ASSESSMENT 2021**

P.6 MATHEMATICS

Name: _____

Branch: _____

SECTION A

1. Workout: 4×3

2. Simplify: $3k - 2p + k + 3p$

3. What is the place value of 4 in the number 2634?

4. Given that set $K = \{0,2,4,6,8\}$ and set $M = \{1,2,3,4,5,6,7\}$
Find the $n(M-N)$

5. Using a ruler, a pencil and a protractor draw an angle of 30° .

6. Simplify: $\frac{2}{3} + \frac{1}{2}$

7. Find the range of the following numbers.

+2, 0, -1, +3, -5 and +3

8. Eric bought a TV set at shs 150,000 and later sold it at a profit of shs 24,000, how much did he sell the TV set?

9. The square flower garden of length 5m is to be fenced using a wire mesh, find the length of the garden to be fenced.

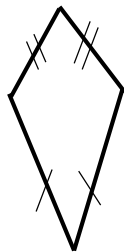
10. Workout: **Wks** **DAY**
 4 5
 - 1 3

11. Convert 32km to meters.

12. Add: $-2 + -5$

13. Write 94,049 in words.

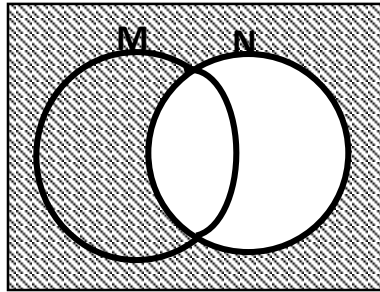
14. How many lines of folding symmetry has a kite?



15. Solve for P.

$$P + 4 = 9$$

16. Describe the shaded region on the Venn diagram below.



17. In a school, there are 360 girls. If there are 80 more girls than boys, find the number of boys.

18. Without dividing, show which number is exactly divisible by 3.
403, 131, 2703, 1121.

19. Prime factorise 21 and give your answer in a subscript form.

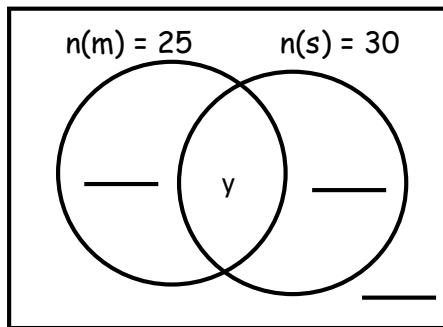
20. Round off 23751 to the nearest hundreds.

SECTION "B" 12 question (60 marks)

21. In a class 45 pupils, 25 like Mathematics, 30 like science, y like both Mathematics and Science while 3 pupils do not like any of the two subjects.

(a) Use the information above to complete the Venn diagram below.

$n(\Sigma) = 45$ pupils.



(3mrks)

(b) How many pupils like both subjects?

(2mrks)

(c) What is the probability of picking at random a pupil who likes only one subject?

(2mrks)

22. Given that $a = 3$, $b = 4$ and $c = 2$

(a) Find the value of $a(b + c)$ (2mrks)

(b) Evaluate $\frac{abc}{b + c}$ (2mrks)

23.a) Study the shopping bill below carefully and complete it.

ITEM	QUANTITY	UNIT COST	TOTAL AMOUNT
Sugar	3kgs	shs 3,400	shs _____
Soap	4bars	shs _____	shs 12,000
Rice	_____kg	shs 4,000	shs 20,000
Salt	500g	shs 1,200	shs 600
	Total Expenditure		Shs _____

(4mrks)

b) If Sophia was given a change of shs 7200, how much did she have at first? (2mrks)

24. Joel is 3 times as old as his daughter, if their total age is 60 years;

(a) How old is the daughter? (3mrks)

(b) How old will each person be in 5 years' time? (2mrks)

25.a) Write 5,372 in expanded form using exponents. (2mrks)

b) Find the sum of the value of 4 and the place value of 3 in 5347. (3mrks)

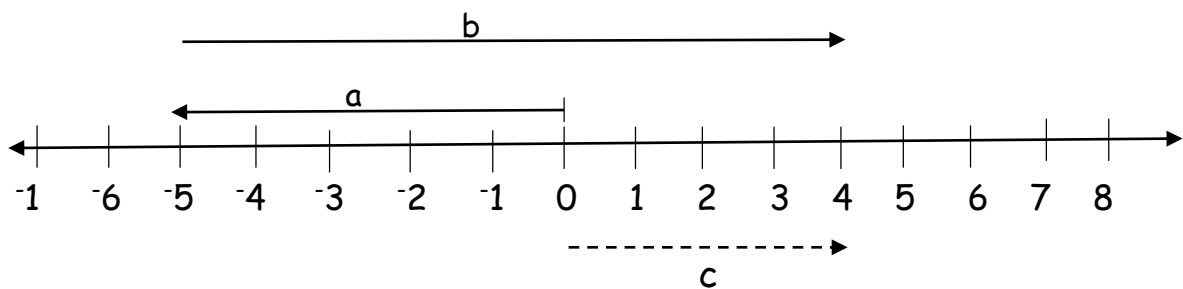
26.a) Using a ruler, a sharp pencil and a pair of compasses only, construct an equilateral triangle of length 4cm. (3mrks)

b) Find the perimeter of the figure above. (2mrks)

27.a) The area covered by a square classroom is 64m^2 , find the length of its sides. (2mrks)

b) Find the 9th triangular number. (2mrks)

28. Study the numberline below and use it to answer the questions that follow.



(a) Write down the integers represented by letters (3mrks)

a = _____ b = _____ c = _____

- (b) Write down the Mathematical statement for the numberline above. (2mrks)

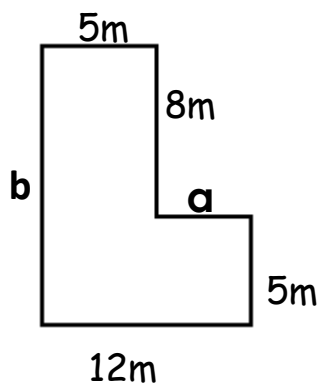
29. Workout: (2mrks)

(a)

Hours	MIN
3	35
- 1	50

- (b) Moureen drove her car at a speed of 75km/hr for 3 hours, how long did she cover to complete the journey. (2mrks)

30. Study the figure below and use it to answer the questions that follow.



(a) Find the value of;

(i) a

(ii) b

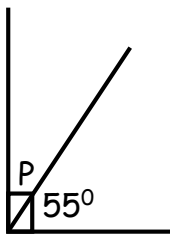
(2mrks)

(b) Find the area of the figure above.

(3mrks)

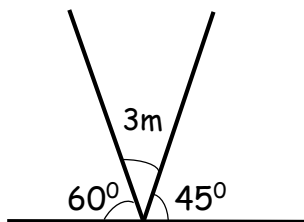
31. Find the size of the unmarked angles.

(a)



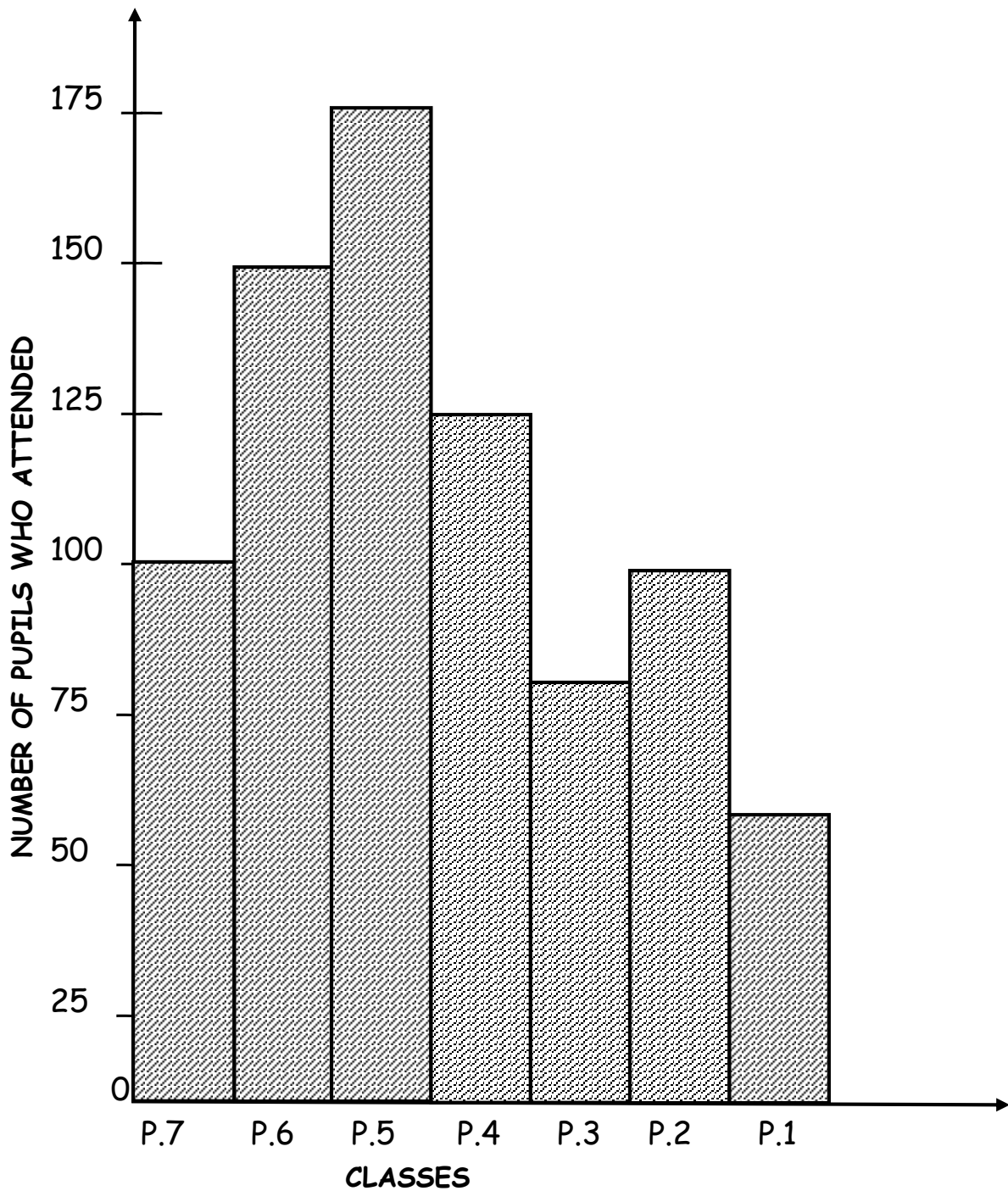
(2mrks)

(b)



(3mrks)

32. Study the graph below and use it to answer the questions that follow. It shows the number of pupils who attended a study tour to Eastern Uganda from each class.



(a) Which class registered the highest number of pupils? (1mrks)

(b) How many pupils did the lower classes register? (2mrks)

(c) Find the total number of pupils who attended the tour? (2mrks)

"THE END"