

**MOTHERCARE PREPARATORY SCHOOLS**  
**HOLIDAY WORK (WEEK ONE)**  
**INTEGRATED SCIENCE (TOPICAL QUESTIONS)**  
**PRIMARY SIX**

NAME: \_\_\_\_\_ Stream: \_\_\_\_\_

**TOPIC ONE : CLASSIFICATION OF PLANTS**

**Questions:**

1. What is the difference between flowering and non-flowering plants?

\_\_\_\_\_

\_\_\_\_\_

2. Name two examples of flowering and non-flowering plants.

a. Flowering plants.

i. \_\_\_\_\_

ii. \_\_\_\_\_

b. Non-flowering plants.

i. \_\_\_\_\_

ii. \_\_\_\_\_

3.a) State three characteristics of monocotyledonous plants.

i. \_\_\_\_\_

ii. \_\_\_\_\_

iii. \_\_\_\_\_

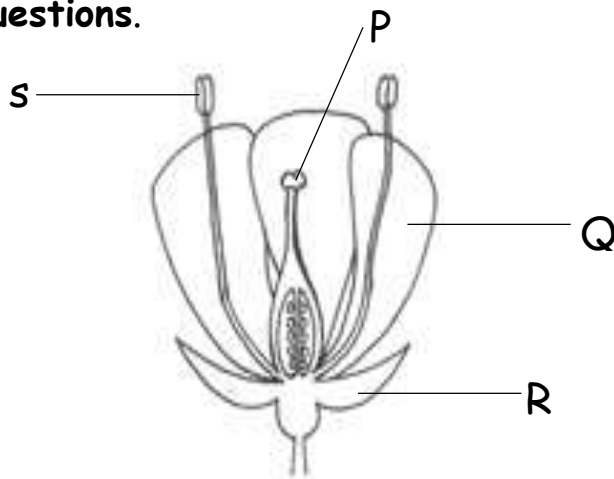
b. State three characteristics of dicotyledonous plants.

i. \_\_\_\_\_

ii. \_\_\_\_\_

iii. \_\_\_\_\_

4. The diagram below is of a flower. Study and use it to answer questions.



- a. Name the parts marked:-

- i. P \_\_\_\_\_
- ii. Q \_\_\_\_\_
- iii. R \_\_\_\_\_
- iv. S \_\_\_\_\_

- b. How useful is part R to a plant.

\_\_\_\_\_

- c. What is the collective name of the parts labelled:-

- i. Q \_\_\_\_\_
- ii. R \_\_\_\_\_

5. Give four groups of non-flowering spore producing plants.

- i. \_\_\_\_\_
- ii. \_\_\_\_\_
- iii. \_\_\_\_\_
- iv. \_\_\_\_\_

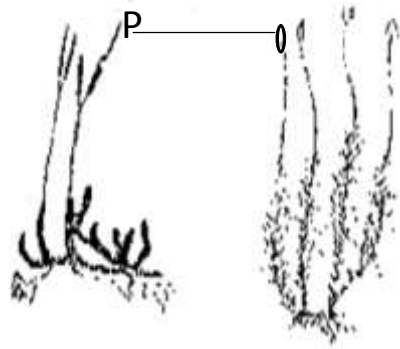
6. Name one non-flowering plants which reproduces using seeds in cones.

\_\_\_\_\_

7. State two economic values of coniferous plants to people.

- i. \_\_\_\_\_
- ii. \_\_\_\_\_

8. The diagram below shows a non-flowering plant. Use it to answer questions.



- a. Name the non-flowering plant shown above.

---

- b. Name part marked P.

---

- c. What do the parts marked p contain?

---

- d. What is the function of the contents you have named above?

---

- 9.a. What are leguminous plants?

---

---

- b. Give one characteristic of legumes.

---

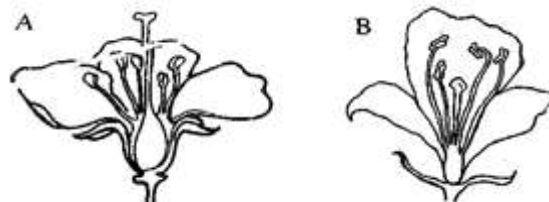
- c. How are legumes important to soil?

---

- d. Give one example of a leguminous plant.

---

10. The diagram below shows two flowers A and B. Use it to answer questions.



a. What is pollination?

---

---

b. What type of pollination does flower A undergo?

---

c. What type of pollination does flower B undergo?

---

d. Give two characteristics of insect pollinated flowers.

i.

---

ii.

---

e. Mention two characteristics of wind pollinated flowers.

i.

---

ii.

---

**THE END**