

# MOTHERCARE PREPARATORY SCHOOLS

## ASSESSMENT ONE - 2021 PRIMARY THREE LITERACY 1B (SST)

Name: \_\_\_\_\_ Stream: \_\_\_\_\_

Branch: \_\_\_\_\_

### SECTION A

1. Name any one element of a good map.

\_\_\_\_\_

2. In which season do farmers harvest their ready crops?

\_\_\_\_\_

3. Which domestic animal guards our homes?

\_\_\_\_\_

4. Give one product from cows.

\_\_\_\_\_

5. How is a bank useful to people in your area?

\_\_\_\_\_

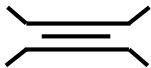
6. Who keeps law and order in your area?

\_\_\_\_\_

7. Name the clouds which provide people with rain?

\_\_\_\_\_

8. Name the map symbol below.



\_\_\_\_\_

9. How was Nambi related to Kintu?

\_\_\_\_\_

10. Write B.O.U in full.

\_\_\_\_\_

11. How is rainfall important to farmers?

\_\_\_\_\_

12. What is wind?

\_\_\_\_\_

13. Name the water harvester made from clay.

\_\_\_\_\_

14. Ateso is to \_\_\_\_\_ as Luganda is to Baganda.
15. Name the most important resource in our division.  
\_\_\_\_\_
16. In which direction does the sun appear in the morning?  
\_\_\_\_\_
17. Where do pedestrians cross the busy roads from?  
\_\_\_\_\_
18. State the physical feature which covers the most part of your community.  
\_\_\_\_\_
19. How is a school uniform useful to a school going child?  
\_\_\_\_\_
20. How many colours does the Uganda flag have?  
\_\_\_\_\_
21. In which division is your school located?  
\_\_\_\_\_
22. Who is a farmer?  
\_\_\_\_\_
23. Mention the lake used for salt mining in Uganda.  
\_\_\_\_\_
24. Give one item used to tell time at home.  
\_\_\_\_\_
25. Apart from sugarcane, give one crop that grows well in a swamp.  
\_\_\_\_\_
26. What do we call a family with the father, mother and their biological children?  
\_\_\_\_\_
27. Give one land form which provides water to people.  
\_\_\_\_\_
28. Who heads a municipality?  
\_\_\_\_\_
29. Give one item bought from the markets.  
\_\_\_\_\_

30. Mention one danger faced by children on their way to and from school.

---

31. Write one important place in your area.

---

32. State the longest river in Uganda.

---

33. How are trees important in your school compound?

---

34. Mention any one need of a school.

---

35. Give the craft used for sweeping your classroom.

---

36. Identify one example of a religious leader.

---

**Give one word for the underlined group of words.**

37. Every day children go to places where we learn/study.

---

38. Our sub county has many water logged areas with vegetation.

---

39. Most Ugandans are people who grow crops and rear animals.

---

40. Mr. Amos was arrested for killing animals which live in the bush.

---

## SECTION B

41.a) What is a community?

---

b) Give two examples of communities in our sub county.

(i) \_\_\_\_\_

(ii) \_\_\_\_\_

c) How are doctors useful in our community?

---

42.a) Give two examples of resources in our area.

(i) \_\_\_\_\_

(ii) \_\_\_\_\_

b) Mention any two uses of land to people.

(i) \_\_\_\_\_

(ii) \_\_\_\_\_

43.a) What is transport?

\_\_\_\_\_

b) Give two types of transport used in our country.

(i) \_\_\_\_\_

(ii) \_\_\_\_\_

c) Mention any one animal used for transport.

\_\_\_\_\_

44. Circle the odd word out.

a) chairs , tables , knives , benches

\_\_\_\_\_

b) Baganda , Basoga , Bagisu , Runyankole

\_\_\_\_\_

c) L. Victoria , L. Katwe , L. Albert , Mt. Rwenzori

\_\_\_\_\_

d) lions , sheep , mankeys , giraffe

\_\_\_\_\_

45.a) What are basic needs?

\_\_\_\_\_

b) Mention any two examples of basic needs of man.

(i) \_\_\_\_\_

(ii) \_\_\_\_\_

c) Give one problem faced by people when they are looking for basic needs.

\_\_\_\_\_

46.a) What are water harvesters?

\_\_\_\_\_

b) Mention any two examples of water harvesters at home.

(i) \_\_\_\_\_

(ii) \_\_\_\_\_

c) How is water useful at home?

\_\_\_\_\_

47.a) What is a swamp?

\_\_\_\_\_

b) How are swamps important in your division?

(i) \_\_\_\_\_

(ii) \_\_\_\_\_

c) Which type of fish is got from swamps?

\_\_\_\_\_

48. Match A with B.

**A**

a) Schools

b) Hospitals/clinics

c) Taxi and bus parks

d) Police stations

**B**

medical care

transport

security

education

**Correct order**

a) Schools

\_\_\_\_\_

b) Hospitals/clinics

\_\_\_\_\_

c) Taxi and bus parks

\_\_\_\_\_

d) Police stations

\_\_\_\_\_

49.a) Write two examples of coin money in Uganda.

(i) \_\_\_\_\_

(ii) \_\_\_\_\_

b) Mention two examples of bank/paper note money in Uganda.

(i) \_\_\_\_\_

(ii) \_\_\_\_\_

50.a) What is a school?

\_\_\_\_\_

b) Give any two symbols of a school.

(i) \_\_\_\_\_

(ii) \_\_\_\_\_

c) Write one group of people who work at school.

\_\_\_\_\_

51.a) What are physical features?

\_\_\_\_\_

b) Mention any two examples of physical features you know.

(i) \_\_\_\_\_

(ii) \_\_\_\_\_

c) Name the physical feature below.



\_\_\_\_\_

52. Match the following correctly.

**List A**

cow

cat

dog

goat

**List B**

kid

puppy

calf

kitten

**Correct order**

cow

\_\_\_\_\_

cat

\_\_\_\_\_

dog

\_\_\_\_\_

goat

\_\_\_\_\_

53.a) What is a map?

\_\_\_\_\_

b) Mention any three qualities of a good map.

(i) \_\_\_\_\_

(ii) \_\_\_\_\_

(iii) \_\_\_\_\_

54.a) What are economic activities?

\_\_\_\_\_

b) Mention any two examples of economic activities done in your division.

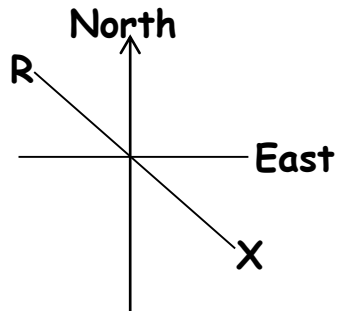
(i) \_\_\_\_\_

(ii) \_\_\_\_\_

c) Why do people carry out economic activities?

\_\_\_\_\_

55.



a) Name the direction marked;

(i) **R** \_\_\_\_\_

(ii) **X** \_\_\_\_\_

b) Name the above instrument drawn.

\_\_\_\_\_

c) Why do pilots need the above drawn instrument in their work?

\_\_\_\_\_

**-End-**