

# MOTHERCARE PREPARATORY SCHOOLS

REVISION WORK TERM 1 - 2020

P.7 INTEGRATED SCIENCE

TIME ALLOWED: 2 HOURS 15 MINUTES

SET 6

Index No:

Random No.						Personal No.		

Candidate's Name : \_\_\_\_\_

Candidate's Signature : \_\_\_\_\_

School Random No. : \_\_\_\_\_ Stream: \_\_\_\_\_

Centre ID : \_\_\_\_\_

Read the following instructions carefully.

This paper is made up of two sections A and B.

Attempt **all** questions. All answers to both sections A and B must be written in the spaces provided.

All answers must be written using a blue or black ball point pen or ink. Diagrams should be drawn in pencil.

Unnecessary alteration of work may lead to loss of marks.

Any handwriting that cannot be easily read may lead to loss of marks.

Do not fill any thing in the boxes indicated for **Examiner's use only**.

FOR OFFICIAL USE ONLY			
SECTION	EXRS MARKS	T/L MARKS	OFFICE
A			
B			
TOTAL			

**SECTION A:**

1. Give any one reason why people take alcohol  
\_\_\_\_\_
2. What name is given to the first set of teeth a child develops?  
\_\_\_\_\_
3. Why are pedestrians encouraged to cross the busy road at a zebra crossing?  
\_\_\_\_\_
4. Point out one PIASCY message that may help to protect school children from getting HIV.  
\_\_\_\_\_
5. State any one example of a chemical change?  
\_\_\_\_\_
6. The diagram below shows a head of a bird.



Under what group of perching birds does the bird with such beak belong?

\_\_\_\_\_

7. Mention one example of amphibians.  
\_\_\_\_\_
8. Mention one habit that is likely to affect the efficiency of one's lungs.  
\_\_\_\_\_
9. Akello's baby was seen to have a runny nose, red eyes, sore mouth, rash on the body and dry cough. Which childhood immunisable disease is Akello's child likely to be suffering from?  
\_\_\_\_\_
10. How are insect pollinators attracted to flowers at night?  
\_\_\_\_\_
11. What term can be used to describe animals that have a backbone?  
\_\_\_\_\_
12. How can a farmer improve soil fertility in his garden?  
\_\_\_\_\_

3. Which part of a flower produces pollen grains?

14. Point out one way one can promote oral health.

15. How does overgrazing lead to soil erosion?

16. What is a mixture?

17. Mention the form of energy which is useful to the eye.

18. In which component of a clean home is faeces deposited?

**The diagram below shows the left hand side of the heart.**



19. State the similarity in the blood carried by blood vessel **P** and that of **Q**.

20. How is reproduction in reptiles similar to that in birds?

21. What important fibre do we get from sheep that is used in a textile industry?

22. Give one seed which is a source of proteins to human bodies.

23. Mention one disease that spreads through the order of the 6F's?

24. How can one make water safe for drinking?

25. Name the gas that the body uses to generate energy from the food we eat.  
\_\_\_\_\_
26. Why do objects float on water?  
\_\_\_\_\_
27. Why are plants called producers in a food chain?  
\_\_\_\_\_
28. Write one way in which water can be used as an energy resource.  
\_\_\_\_\_
29. Why organism spreads sleeping sickness?  
\_\_\_\_\_
30. Point out one behaviour Aaron can use to identify a cow on heat.  
\_\_\_\_\_
31. What is science?  
\_\_\_\_\_
32. How does the use of a solar cooker help in conserving the environment?  
\_\_\_\_\_
33. State any one characteristic of seeds dispersed by animals.  
\_\_\_\_\_
34. How long is the gestation period of a doe (female rabbit)?  
\_\_\_\_\_
35. What treatment is best for a dehydrated person?  
\_\_\_\_\_
36. Which element of Primary health Care is put in practice when a school child washes his hands after visiting a latrine?  
\_\_\_\_\_
37. Why is a free-range system of keeping poultry taken to be a cheaper method?  
\_\_\_\_\_
38. A P.1 class was brought out for a free activity. Name one game they can play using wind.  
\_\_\_\_\_
39. Point out one factor you would consider when choosing a site for an apiary.  
\_\_\_\_\_
40. State the danger of having stagnant water around the compound.  
\_\_\_\_\_

## SECTION B

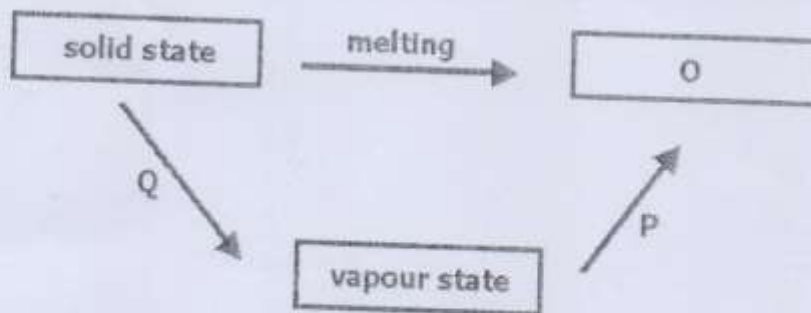
41(a) Mention two processes by which soil is formed.

- (i) \_\_\_\_\_  
(ii) \_\_\_\_\_

(b) Which farming methods are destructive to the soil?

- (i) \_\_\_\_\_  
(ii) \_\_\_\_\_

42. The diagram below represents changes of states of matter.



(a) Name the state of matter marked **O**.

\_\_\_\_\_

(b) What form of energy is responsible for the change of state marked **Q**?

\_\_\_\_\_

(c) How is the change of state marked **P** important in a water cycle?

\_\_\_\_\_

(d) What type of change is melting?

\_\_\_\_\_

43(a) What is an insulator of heat?

\_\_\_\_\_

(b) Name two insulators commonly used.

(i) \_\_\_\_\_

(ii) \_\_\_\_\_

(c) Identify the type of accident that can be controlled by use of insulators.

\_\_\_\_\_

44(a) Name the tissues that hold bones together in the human body.

\_\_\_\_\_

(b) Why is the skeleton in human bodies considered important?

\_\_\_\_\_

(c) A skeleton provides protection to delicate parts of the body. How are the following parts protected?

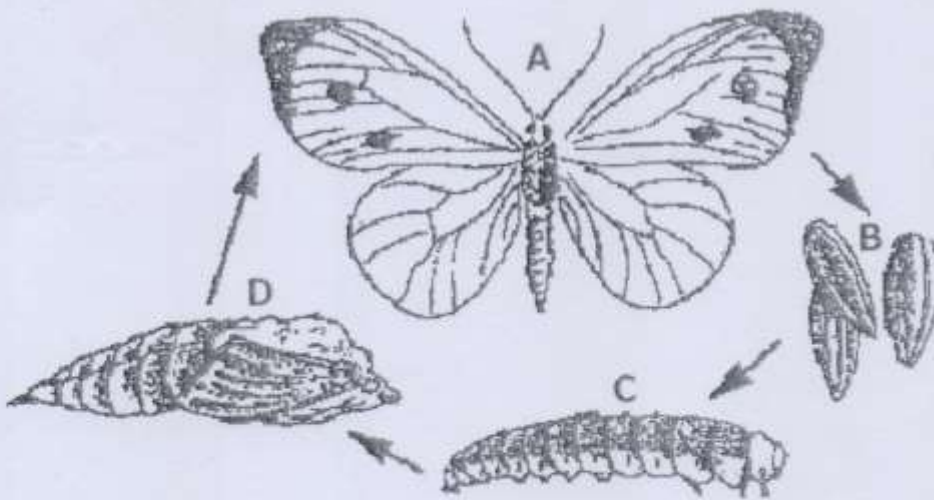
(i) Brain

\_\_\_\_\_

(ii) The heart

\_\_\_\_\_

45(a) Study the diagram below and answer the questions that follow.



(a) What type of life cycle is shown in the diagram above?

\_\_\_\_\_

(b) How is stage A important in the environment?

\_\_\_\_\_

(c) Give one way stage C is dangerous in the environment.

\_\_\_\_\_

(d) Why is stage B laid on leaves of plants?

\_\_\_\_\_

46(a) What is first aid?

\_\_\_\_\_

(b) What immediate thing would you do to help a person who is near drowning?

\_\_\_\_\_

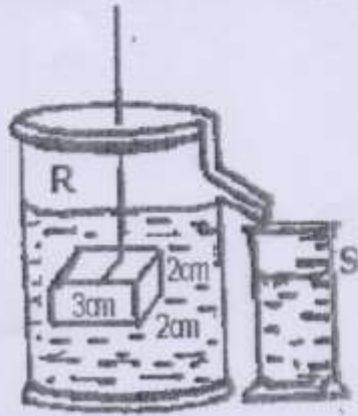
(c) How are crutches helpful to a person recovering a fractured leg?

\_\_\_\_\_

(d) Name any other tool used in first aid management.

\_\_\_\_\_

47. The experiment below was set up by a P.5 class.



(a) Name container R.

\_\_\_\_\_

(b) How much water is in container S?

\_\_\_\_\_

(c) What will happen to the level of water in container R when the block is removed?

\_\_\_\_\_

(d) Calculate the density of the object if it has a mass of 36 grams.

48. Use simple sentences to define the following:

(a) Immunity

\_\_\_\_\_

(b) Poultry vices

\_\_\_\_\_

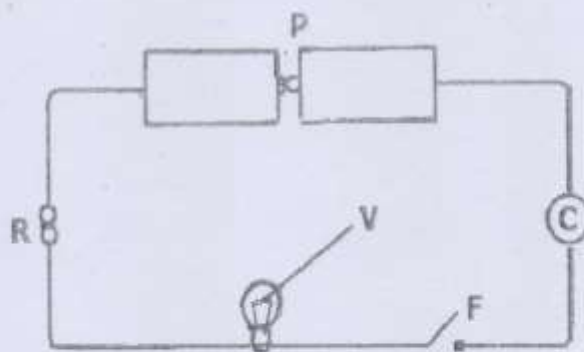
(c) Photosynthesis

\_\_\_\_\_

(d) Convection

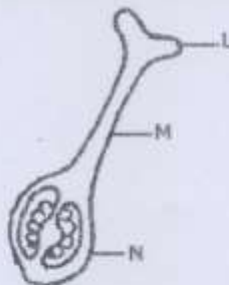
\_\_\_\_\_

- 49(a) The diagram below shows an electric circuit. Study it carefully and answer questions about it.



- (a) Name part marked **F**.  
\_\_\_\_\_
- (b) Give the function of part marked **R**.  
\_\_\_\_\_
- (c) What form of energy is contained in part marked **P**?  
\_\_\_\_\_
- (d) Why should part marked **V** fail to produce light when **F** is closed?  
\_\_\_\_\_

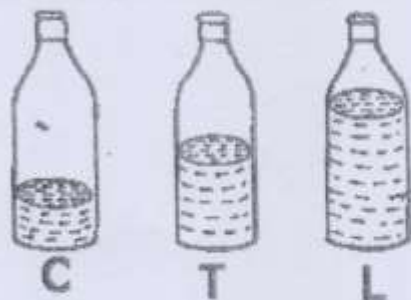
50. The diagram below shows part of a flower. Use it to answer question 50.



- (a) Name the part marked **L**.  
\_\_\_\_\_
- (b) What general name is given to the part of the flower shown aside?  
\_\_\_\_\_
- (c) One of the characteristics of fruits is the possession of two scars. Mention the scar formed when part **M** falls off.  
\_\_\_\_\_
- (d) How are brightly coloured petals useful to a flower?  
\_\_\_\_\_



1. Study the diagram and answer the questions about it.



(a) Which of the bottles, when air is blown into them, will produce sound of the highest pitch?

\_\_\_\_\_

(b) Give a reason for your answer in (a) above.

\_\_\_\_\_

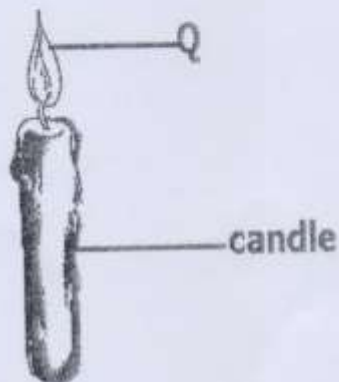
(c) How can you make the bottles to produce the same sound pitch of sound?

\_\_\_\_\_

(d) What does the term "volume of sound" mean?

\_\_\_\_\_

52. The diagram shows a burning candle. Use it to answer the questions about it.



(a) Name two forms of energy given off at Q.

(i) \_\_\_\_\_

(ii) \_\_\_\_\_

(b) Which component of air supports the candle to burn?

\_\_\_\_\_

(c) Identify one other process in living things that uses the same gas as in the experiment above.

\_\_\_\_\_

53(a) The diagram below shows a clinical thermometer.



(a) What is the use of the above instrument?

\_\_\_\_\_

(b) Name liquid marked **K**.

\_\_\_\_\_

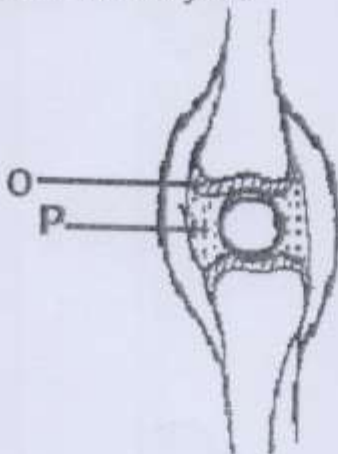
(c) In a human heart, which part carries out a similar function as part marked **X**?

\_\_\_\_\_

(d) Give the importance of part marked **X**.

\_\_\_\_\_

54(a) The diagram shows a joint.



(a) Name the type of movable joint shown.

\_\_\_\_\_

(b) Identify one part of the body where the above joint is located.

\_\_\_\_\_

(c) Which force is reduced by fluid **P**?

\_\_\_\_\_

(d) How is **O** important in a joint?

.....  
.....

55. Study the table below showing groups of animals.

Q	R	T
Ostrich	Rabbit	Frog
An eagle	Sheep	Newts
Duck	Bat	Salamander

- (a) Give one general name for animals in group **T**.
- \_\_\_\_\_
- (b) State one characteristic of animals in group **R** that is not in other groups.
- \_\_\_\_\_
- (c) How are animals in group **Q** similar to group **R**?
- \_\_\_\_\_
- (d) Why is a bat regarded as a mammal not as a bird?
- \_\_\_\_\_