

# MOTHERCARE PREPARATORY SCHOOLS

REVISION WORK, TERM I - 2020

P.7 INTEGRATED SCIENCE

SET V

TIME ALLOWED: 2 HOURS 15 MINUTES

Index No:

| Random No. |  |  |  |  | Personal No. |  |  |
|------------|--|--|--|--|--------------|--|--|
|            |  |  |  |  |              |  |  |

Candidate's Name : MARKING GUIDE

Candidate's Signature : SCIENCE SET V

School Random No. : \_\_\_\_\_ Stream: \_\_\_\_\_

District ID : \_\_\_\_\_

Read the following instructions carefully.

1. This paper is made up of two sections **A** and **B**.
2. Attempt **all** questions. All answers to both sections **A** and **B** must be written in the spaces provided.
3. All answers must be written using a blue or black ball point pen or ink. Diagrams should be drawn in pencil.
4. Unnecessary alteration of work may lead to loss of marks.
5. Any handwriting that cannot be easily read may lead to loss of marks.
6. Do not fill any thing in the boxes indicated **for Examiner's use only**.

| FOR OFFICIAL USE ONLY |            |           |        |
|-----------------------|------------|-----------|--------|
| SECTION               | EXRS MARKS | T/L MARKS | OFFICE |
| A                     |            |           |        |
| B                     |            |           |        |
| TOTAL                 |            |           |        |

## SECTION A

1. Give any one habit that can promote our oral health.

Dental flossing || Brushing teeth every after meal || Rinsing the mouth

2. Write one word that describes a method of grazing goats using ropes.

Tethering

3. Which class of levers has the load between the pivot and the effort?

Second class lever

4. Name the property of air that is illustrated by filling air in the balloon.

Air occupies space

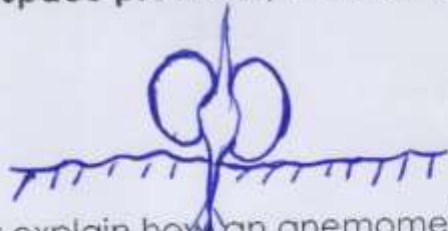
5. In which way is the breast feeding useful to the mothers?

Breast feeding delays the next pregnancy

6. What type of change occurs when dead organic matter rots?

Chemical change

7. In the space provided, draw an illustration of epigeal germination.



8. Briefly explain how an anemometer is useful at the weather station.

Anemometer measures the speed of wind

9. Give the type of electricity produced when steam power is used to turn turbine and generator.

Hydro-electricity

10. How does the function of the renal vein differ from that of the renal artery?

The renal vein carries deoxygenated blood from the kidney to the vena cava while the renal artery carries oxygenated blood from the aorta to the kidney.

The diagram below of a bird's head. Use it to answer questions 11-12.



11. To which group of birds does the bird with a head belong?

Birds of prey || Preying birds

12. How does this beak help the bird in terms of feeding?

The beak tears flesh

13. State one way diseases of the circulatory system can be prevented.

- By doing physical exercises // Feeding on a balanced diet.

14. List one way sound and light as forms of energy are similar.

- Both can be reflected.

15. Below are two permanent magnets. What will happen if part A is brought closer to part B?



They magnets will attract each other // Attraction will occur.

16. Suggest the use of a Eureka can in the measurement of volume.

- It holds water used in displacement method.

17. How does a fuse work as a safety device in an electric circuit?

By melting and breaking the circuit in case of high voltage

18. Give any one source of biogas as an energy resource.

Cowdung // Peelings of matooke // chicken droppings // Faeces.

19. In which way is a scald different from a burn?

- A scald is caused by wet heat while a burn is caused by dry heat.

20. Mention any one property of light. // It travels in all directions.

- It travels in a straight line // It can be reflected

21. Write one reason why heated air rises over cold air.

- Heated air becomes less dense than cold air.

22. State the major reason why a farmer should mulch a tomato garden using dry plant materials.

- To keep moisture in the soil // To maintain soil moisture.

23. Apart from eggs and liver, give any other source of food for vitamin E.

- Avocado // Spinach // Sunflower seeds // Olive oil

24. How would you find the volume of an object given the mass and density?

- Using matrix method // Calculation method // Computation method.

25. Suggest any one reason why Uganda government gave freely treated mosquito nets to the community.

- To ensure that even poor people sleep under treated mosquito nets.

26. What plant process requires carbon dioxide to take place?

- Photosynthesis.

27. Give one way fowl vices are controlled among poultry.

- By debeaking // Hanging vegetables // Provide dark laying boxes.

28. Write down any one emotional characteristic that occur in adolescents.

- Getting interested in members of the opposite sex.

- Being rebellious // Need a lot of freedom

29. In which way does the duty of a drone differ from that of a Queen in a bee-hive?

- A drone fertilizes the eggs of the queen while the queen lays eggs.

30. Mention any one effect of HIV/AIDS in the community.

- It leads to death of people in the community. It leads to orphans in the community.

31. Why would a hen's egg fail to hatch after 21 days of incubation by mother hen?

- When it has a crack. When it has a soft shell. When it has two embryos. When it was not fertilized.

32. Write down any one common device used in measurement of mass.

- Weighing scales. A beam balance. A spring balance.

33. How is synovial fluid important in a movable joint?

- It reduces friction in a joint.

34. What is the use of a magnet to a sailor?

- It is used in compasses to show direction.

35. Why are water logged soils not suitable for crop growing?

- It leads to turgidity. Water logged soils contain a lot of water that make seeds rot.

36. Which metal can remain a liquid at room temperature?

- Mercury.

37. Mention any one property of hard water.

- Soap is less effective. It's slippery or slimy.

38. Give any one practice carried out by people to control rats in their homes.

- By keeping cats. Poisoning rats. Trapping rats.

39. What term is given to the arrangement of soil layers from bottom to top?

- Soil profile.

Study the diagram below of a flower and use it to answer question 40.



40. What type of pollination is shown by the arrow taking place in the diagram above?

- Self pollination.

SECTION B

41(a) Write the meaning of term air.

- Is a mixture of gases.

(b) Give the component of air that helps in the following:

(i) Making of starch.

- Carbon dioxide.

(ii) Formation of nitrates.

- Nitrogen.

(c) State one danger of wind to the human health.

- Wind destroys crops // buildings // It causes accidents in air fields.  
- Winds spreads air borne diseases

42(a) Give the importance of the following food values in the human body.

(i) Calcium: - Strengthens bones and teeth.

(ii) Vitamins: - Protect the body against diseases // Boost body immunity against disease germs.

(iii) Carbohydrates: - Provide energy to the body.

(b) Why do pregnant mothers need more food rich in proteins?

- For proper growth of foetus.

43(a) What scientific name refers to animals that feed on remains of other dead animals?

- Scavenger animals.

(b) Write two examples of the above animals in the environment.

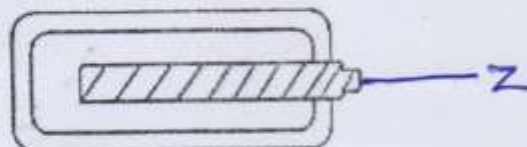
(i) - Hyenas //

(ii) - Jackals

(c) How are the animals named in (b) above useful to the environment?

- They clean the environment by eating carrion.

44. The diagram below is of a simple dry cell. Use it to answer questions that follow.



(a) Using an arrow with letter Z show the position of the positive terminal.

(b) Write down the capacity voltage the dry cell produces when still new.  
- 1.5 Volts.

(c) Give any one device at home that uses the above item.  
- a torch // a radio // a wall clock // a remote

(d) State the energy change that takes place when the above item is in use.  
- chemical energy changes to electric energy.

45(a) Write down any three activities in PHC the community can do as a control against malaria.

(i) - Draining stagnant water // spraying houses using insecticides.

(ii) - Slashing bushes around homes.

(iii) - Ciling stagnant water

(b) Which element of PHC is useful in the fight against poor feeding in the communities?

- Food and nutrition.

46. The diagram below is of a human body system. Use it to answer the questions that follow.



(a) Name the type of body system drawn.

- Female reproductive system.

(b) What name is given to the parts marked R and K?

(i) R - Uterus // womb.

(ii) K - Kidney // Left Kidney.

(c) State the function of the part marked T.

- It collects urine before urination occurs.

47. Match the insect borne diseases below with the vectors that spread them.

**Diseases**

Elephantiasis

Shigellosis

River blindness

Scabies

**Vectors**

black flies

mites

house flies

culex mosquito

- (i) Elephantiasis: Culex mosquito  
 (ii) Shigellosis: House fly  
 (iii) River blindness: Black fly  
 (iv) Scabies: Mite.

48(a) Give any two examples of crops that can be dispersed by explosive mechanism.

- (i) - Soya beans || Peas  
 (ii) - Beans

(b) Apart from having hooks and spines, give two other characteristics of seed dispersed by animals.

- (i) - They are scented when ripe  
 (ii) - They put an attractive colour when ripe.

49(a) List any two ways plants benefit from solar energy.

- (i) - Plants get light energy to carry out photosynthesis.  
 (ii) - Plants get warmth used by plants during germination.

(b) State the two dangers of solar energy to plants.

- (i) - It makes plants wilt || dry.  
 (ii) - It causes drought.

50(a) What are two common methods used to prepare alcohol?

- (i) - Distillation method.  
 (ii) - Fermentation method.

(b) Mention any two raw materials needed in the preparation of alcohol.

- (i) - Yeast || Cassava || Millet  
 (ii) - Sorghum || ripe bananas || Maize.

51. Complete the table on immunization below by filling in the missing word.

| DISEASE           | VACCINE            | SITE             | CAUSE       |
|-------------------|--------------------|------------------|-------------|
| a) Tuberculosis.. | BCG                | Right Upper arm  | Bacteria    |
| Polio             | Polio Vaccine      | c) Mouth.....    | Virus       |
| Whooping cough    | DPT Vaccine        | Left Upper thigh | d) Bacteria |
| Measles           | b) Measles Vaccine | Left Upper arm   | Virus       |

52(a) Apart from diarrhea, write down two components of the 3Ds.

- (i) Dehydration  
 (ii) Death.

(b) Mention the two major mineral salts which are lost by a person during excessive diarrhea.

(i) - Sodium

(ii) - Potassium.

53(a) Mention the system commonly practiced in rearing poultry in rural areas.

- Free range system.

(b) Write down any two common vices in poultry.

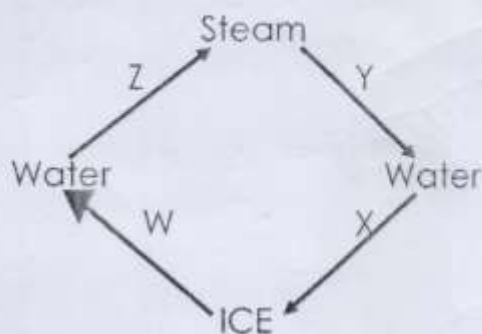
(i) - Egg eating // cannibalism

(ii) - Toe pecking // Feather pecking.

(c) Give any one reason why vaccines and disinfectants are used in poultry keeping.

- To protect poultry from diseases // infections.

54. The diagram below is of a water cycle. Use it to answer questions that follow:



(a) What energy is required to cause process Z to occur?

- Heat

(b) What process occurs at Y?

- Condensation

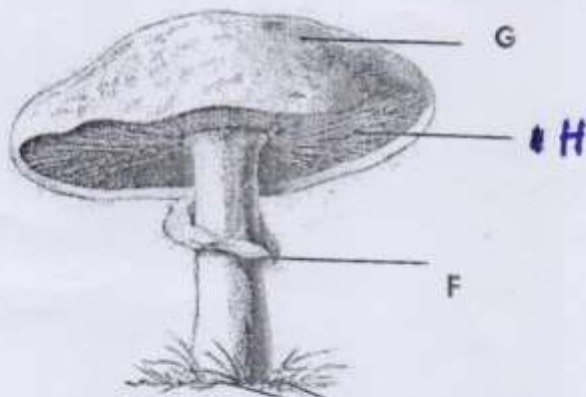
(c) What process takes place at W?

- Melting.

(d) What type of change occurs in those processes?

- Physical Change.

55. Study the mushroom and answer the questions that follow.





a) To which group of living things does it belong?

- Fungi.

b) State the function of part H.

- It produces and stores spores.

c) Apart from mushrooms, identify any one other example of such organisms.

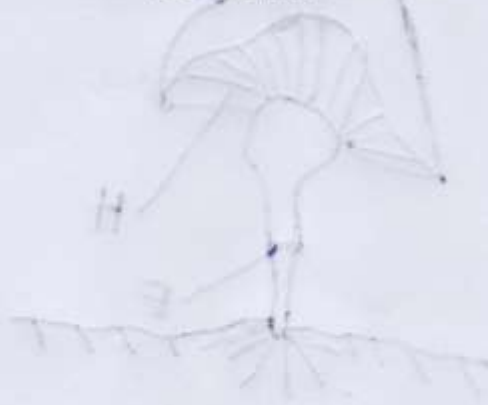
- Puffballs // Toadstools // yeast // Moulds.

(d) Which food value does man get from eating the above organism?

- Minerals // vitamins.

HAPPY HOLIDAYS

\*\*\*\*\*GOD BLESS\*\*\*\*\*



Science set V correction

No 55.

