

# MOTHERCARE PREPARATORY SCHOOLS

## P.4 INTEGRATED SCIENCE

Name: \_\_\_\_\_ Stream: \_\_\_\_\_

Branch: \_\_\_\_\_

### SECTION A

1. How are eyes useful to people?  
\_\_\_\_\_
2. Which type of clouds provide us with water?  
\_\_\_\_\_
3. State any one material people use to keep their teeth clean.  
\_\_\_\_\_
4. Apart from giving us meat, how else are cows useful to us?  
\_\_\_\_\_
5. Name the part of the plant that absorbs water and mineral salts from the soil.  
\_\_\_\_\_
6. Give one example of a seed which undergoes the type of germination.  
\_\_\_\_\_

Cotyledon



7. What name is given to a young one of a dog?  
\_\_\_\_\_
8. Give a reason why photosynthesis cannot take place at night.  
\_\_\_\_\_

9. Why is the sun important in the environment?

\_\_\_\_\_

10. Mention any one immunisable disease.

\_\_\_\_\_

11. Why do we boil water for drinking?

\_\_\_\_\_

12. Give one example of an animal which lives in water.

\_\_\_\_\_

13. Write any one type of leaf venation.

\_\_\_\_\_

14. Write one component of the soil.

\_\_\_\_\_

15. Which part of a cassava plant is eaten by people?

\_\_\_\_\_

The diagram below shows an item made from soil.



16. Name the item shown above.

\_\_\_\_\_

17. Name the type of soil from which such an item is made.

\_\_\_\_\_

18. Why do bees visit flowers?

\_\_\_\_\_

19. Give one example of a perennial crop.

\_\_\_\_\_

20. Name the gas necessary for burning to take place.

\_\_\_\_\_

21. What are seedlings?

\_\_\_\_\_

\_\_\_\_\_

22. Why do we keep our finger nails short?

\_\_\_\_\_

23. Mention any one natural source of water in the environment.

24. State one danger of germs to people.

25. Name one animal that guards our homes.

26. Give the function of the structure marked R to the plant.



27. What is pollination?

28. Write any one function of leaves to a plant.

29. Give one example of an insect.

30. Write any one common pest.

31. Why do we wash our hands with soap?

32. Why do plants with weak stems climb others?

33. Give one characteristic of living things.

34. State the sense organ for seeing.

35. What do we call the covering of top soil with dry plant materials?



36. Name any one example of a stem tuber.

37. Why do animals move from one place to another?

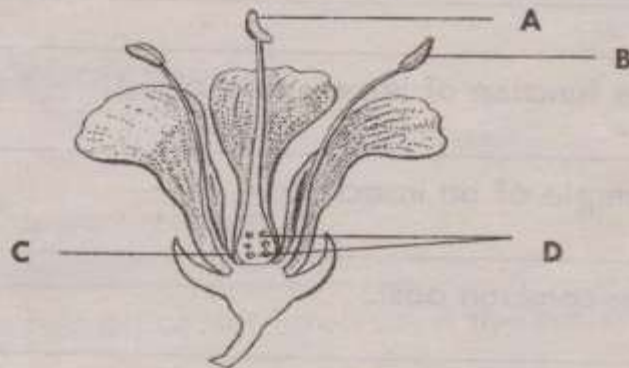
38. Write any one part of a flowering plant.

39. How can we prevent getting diarrhoeal diseases at school?

40. Name one insect that is eaten by people.

### SECTION B

41. Below is a diagram of a flower. Use it to answer questions that follow.



(a) Name the parts of a flower labelled.

(i) A \_\_\_\_\_

(ii) B \_\_\_\_\_

(b) What does part D develop into after fertilization?

(c) Give one use of flowers to people.

42. Domestic animals are animals kept at home.

(a) Mention any two domestic animals.

(i) \_\_\_\_\_

(ii) \_\_\_\_\_

(b) Give two things that are got from domestic animals.

(I) \_\_\_\_\_

(II) \_\_\_\_\_

43. Air is a mixture of gases.

(a) Name any two gases that make up air.

(I) \_\_\_\_\_ (II) \_\_\_\_\_

(b) Which gas is used by plants to make their food?

(c) Which component of air is used during respiration in animals?

44. Study the diagram below and answer the questions that follow.



a) Name the parts marked X and O.

(I) O \_\_\_\_\_

(II) X \_\_\_\_\_

b) Of what use is part marked O to the plant?

c) Give one economic importance of the above plant to people.

45. a) What term is given to the development of a seed into a seedling?

b) Give one condition needed for a seed to germinate.

c) Write one type of germination.

d) What part of a seed develops into a shoot system during germination?

46. a) Mention two natural sources of light.

(I) \_\_\_\_\_ (II) \_\_\_\_\_

b) Name one body organ that needs light to function.

\_\_\_\_\_

c) At what time of the day do shadows appear shortest?

\_\_\_\_\_

47. (a) Give two examples of seeds.

(I) \_\_\_\_\_

(II) \_\_\_\_\_

(b) Give one example of a dicot seed.

\_\_\_\_\_

(c) Write one economic importance of seeds to people.

\_\_\_\_\_

48. The diagram below shows two root systems. Use them to answer the questions that follow.



(a) Name the root systems marked A and B.

(I) A \_\_\_\_\_

(II) B \_\_\_\_\_

(b) Mention any one plant that develops root system marked A.

\_\_\_\_\_

(c) How are root hairs useful to a plant?

\_\_\_\_\_

49. Match the vector in A to the disease it spreads in B.

**A**

Housefly

Water snail

Dog

Tsetse fly

**B**

sleeping sickness

rabies

trachoma

bilharziasis



- (I) Housefly \_\_\_\_\_  
(II) Water snail \_\_\_\_\_  
(III) Dog \_\_\_\_\_  
(IV) Tsetsefly \_\_\_\_\_

50. (a) Name any two garden tools.

- (I) \_\_\_\_\_  
(II) \_\_\_\_\_

(b) Which garden tool is used for collecting rubbish and leveling soil?

(c) Give one way farmers can care for their garden tools.

51. (a) What are annual crops?

(b) Mention two examples of annual crops that are grown in Uganda.

- (I) \_\_\_\_\_  
(II) \_\_\_\_\_

(c) Perennial crops are crops that take more than a year to mature. Give one example of a perennial crop.

52. Leaves manufacture food for the plant.

(a) Name the food manufactured by leaves.

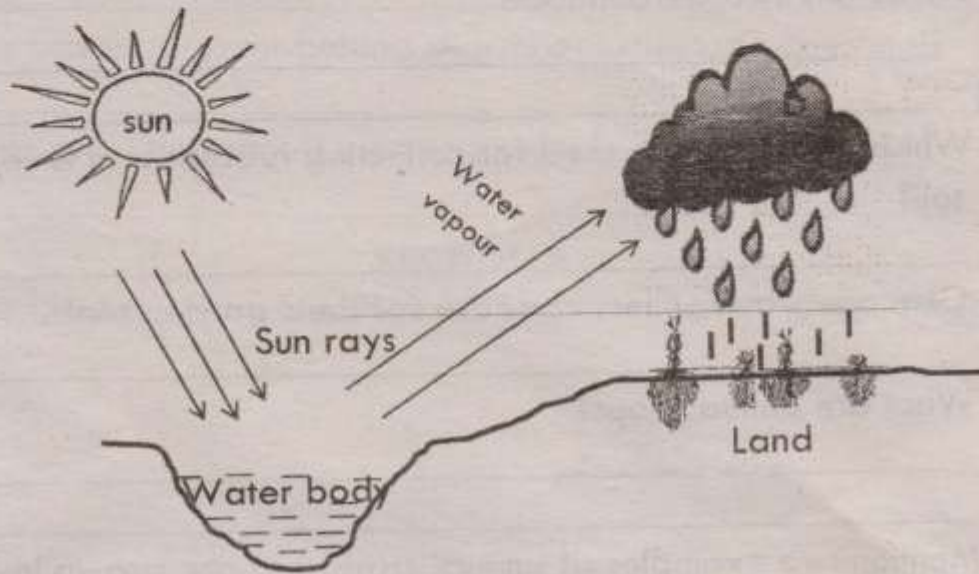
(b) What do we call the green colour in leaves?

(c) Which structures are found on the leaves that plants use for breathing?

(d) Name the type of simple leaf drawn below.



53. Use the diagram below and answer the questions that follow.



(a) Name the part marked D.

(b) Mention two processes involved in the water cycle.

(i) \_\_\_\_\_

(ii) \_\_\_\_\_

(c) State one use of water to people.

54. Personal hygiene is the keeping of the body clean and things we use.

(a) Write down two ways of keeping our body clean.

(i) \_\_\_\_\_

(ii) \_\_\_\_\_



(b) State two materials used for keeping our bodies clean.

(I) \_\_\_\_\_

(II) \_\_\_\_\_

55. (a) What are vectors?

\_\_\_\_\_

\_\_\_\_\_

(b) Give any two examples of vectors.

(I) \_\_\_\_\_ (II) \_\_\_\_\_

(c) Write one disease spread by a vector in our environment.

\_\_\_\_\_

\*\*\*\*\*GOOD LUCK\*\*\*\*\*